



**BUILDING  
TOGETHER**



**BUILDING  
TOGETHER**

**Batu Tiga Quarry Sdn Bhd** (7456-k)  
13th Floor, Menara YTL,  
No.205, Jalan Bukit Bintang,  
55100 Kuala Lumpur

[www.ytlcement.com](http://www.ytlcement.com)

**Disclaimer clause**

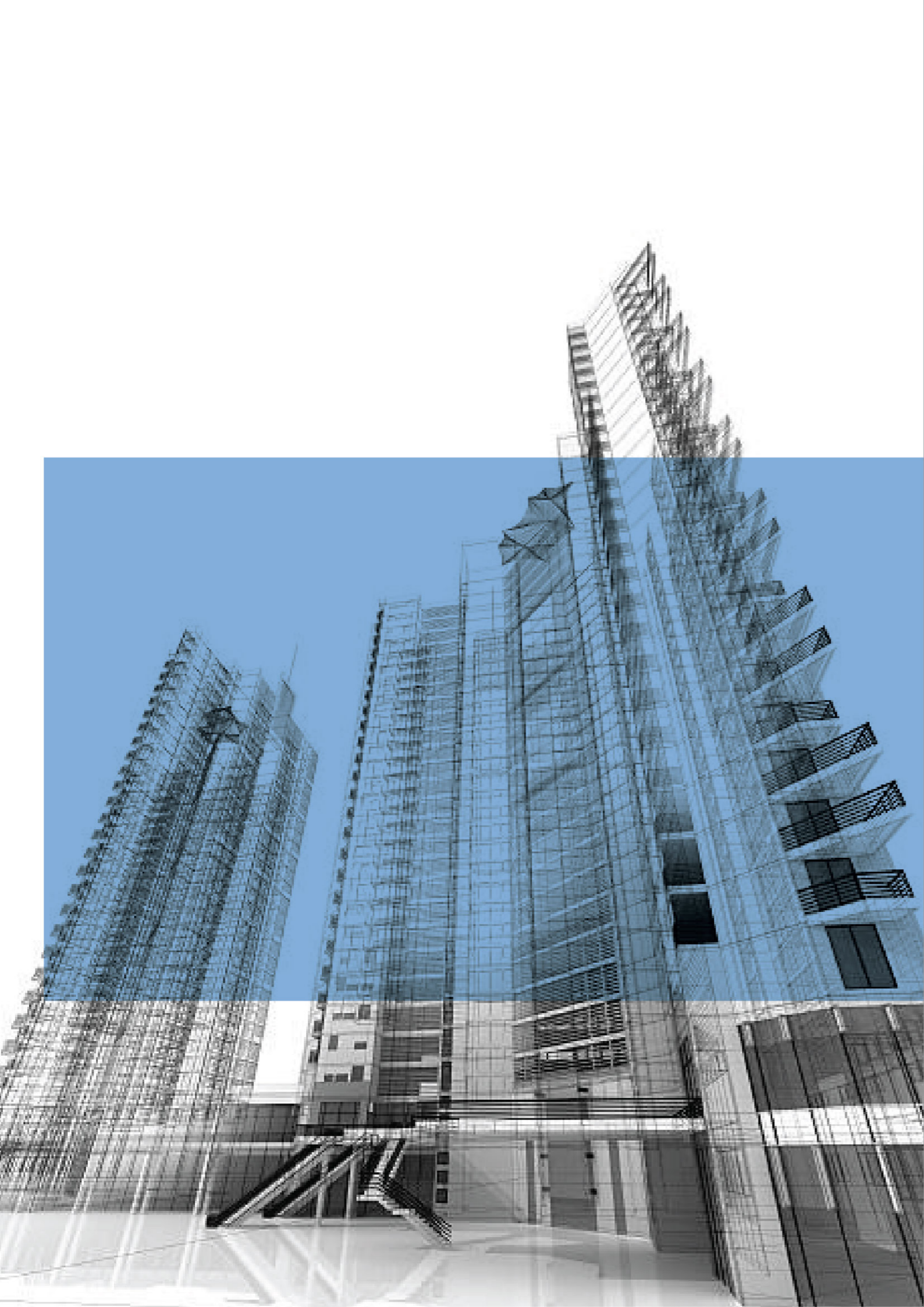
The information given is of a general nature and does not address the specific circumstances of any particular situation. The guidance is given with the best intentions, however nothing in this brochure shall create or be deemed to create any obligations, whether expressed or implied on Batu Tiga Quarry Sdn Bhd. Users are advised to carry out their own tests in order to ascertain the performance and suitability of the product for their particular project.

**Batu Tiga Quarry**

**ECO-SAND**

MS EN12620:2010





# CONTENTS

|   |    |
|---|----|
| INTRODUCING ECO-SAND FOR CONCRETE         | 02 |
| MS EN 12620 : 2010 SPECIFICATIONS         | 03 |
| OTHER QUALITY REQUIREMENTS OF<br>ECO-SAND | 04 |
| 6 REASONS TO CHOOSE ECO-SAND              | 05 |
| PROJECT REFERENCES                        | 07 |
| ABOUT YTL CEMENT                          | 08 |
| ABOUT BATU TIGA QUARRY                    | 08 |

# INTRODUCING ECO-SAND FOR CONCRETE

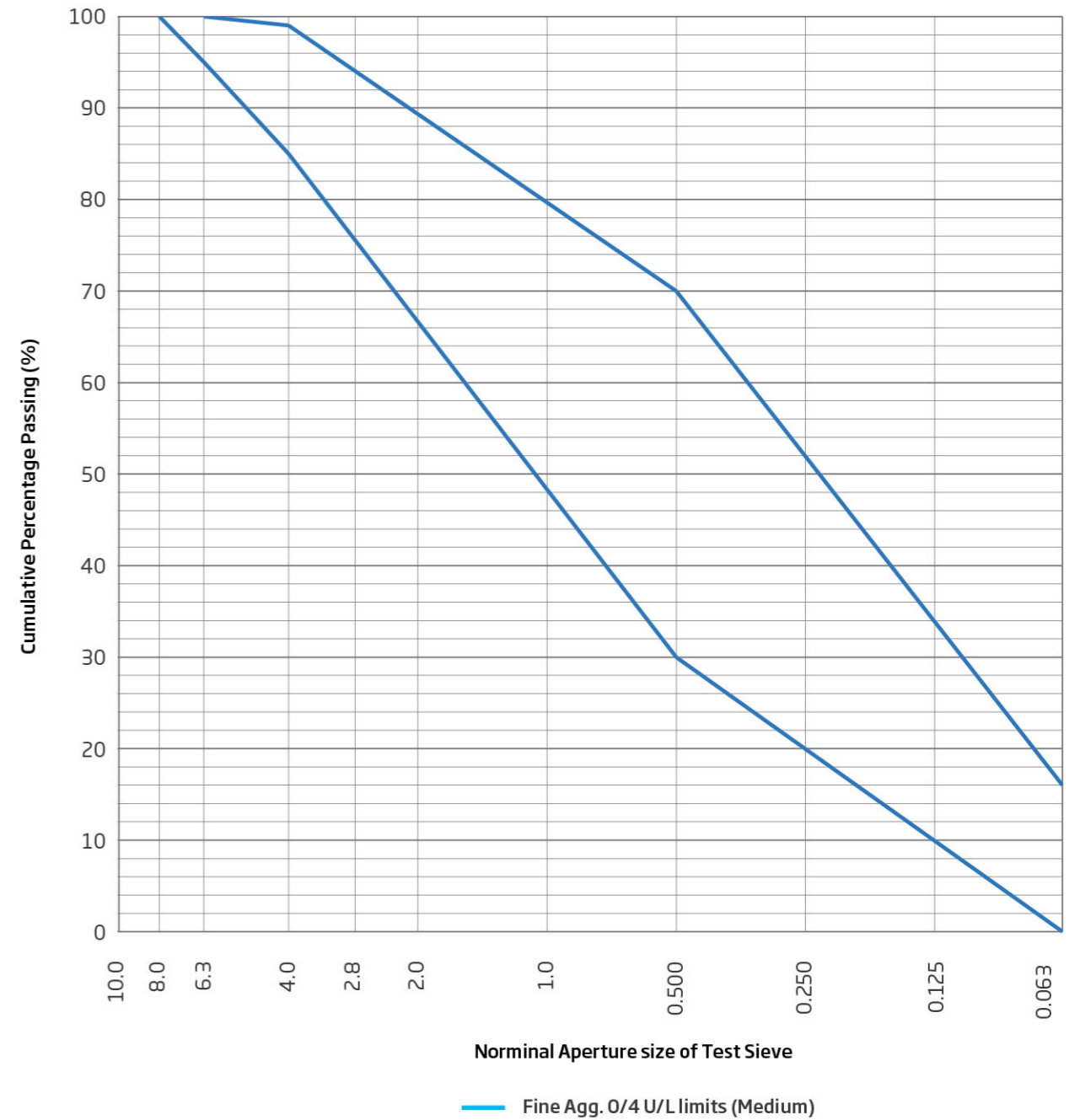
(MS EN 12620 : 2010)

Eco-Sand is efficiently produced using Vertical Shaft Impactors (VSI). This results in superior particle shape and consistent particle size distribution.

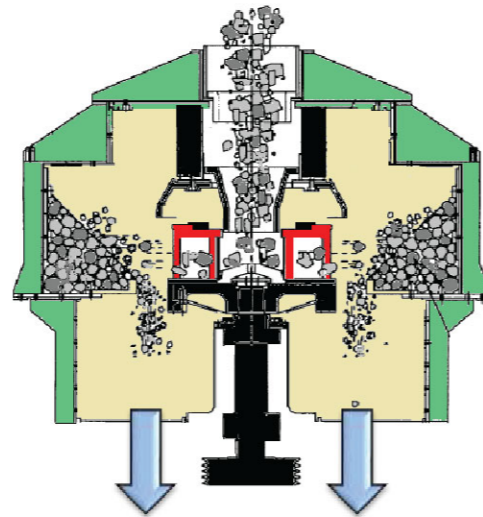
Eco-Sand is suitable for ready-mixed, precast concrete applications and all general purpose concreting.

# MS EN 12620 : 2010 SPECIFICATIONS

Eco-Sand has better consistency of quality compared to other types of sand as it complies to MS EN 12620.



| MS EN 12620:2010<br>(TABLE 2 & 4) |  |            |
|-----------------------------------|--|------------|
| Sieve Size<br>(mm)                | Fine Aggregate Limits                  |            |
|                                   | Percentage By<br>Mass Passing EN Sieve |            |
|                                   | Min<br>(%)                             | Max<br>(%) |
| 8                                 | 100                                    | 100        |
| 6.3                               | 95                                     | 100        |
| 4                                 | 85                                     | 99         |
| 2                                 | 60                                     | 99         |
| 1                                 | 40                                     | 80         |
| 0.500                             | 30                                     | 70         |
| 0.250                             | 5                                      | 45         |
| 0.125                             | 0                                      | 18         |
| 0.063                             | 0                                      | 16         |



## OTHER QUALITY REQUIREMENTS OF ECO-SAND

| DESCRIPTION                                 | TYPICAL VALUE | MS EN 12620 SPECIFICATIONS                     |
|---|---------------|--|
| Particle Size Distribution                  | Pass          | MS EN 12620                                    |
| Fines Content<br>(% passing 0.063 mm sieve) | 12%           | Max 22% for MS EN 12620                        |
| Organic Impurities                          | Absence       | -  |
| Chloride Content                            | 0.005%        | < 0.01%<br>(annual testing will be sufficient) |
| Alkali Silica Reactivity                    | Innocuous     | -  |

## 6 REASONS TO CHOOSE ECO-SAND

1

### CONSISTENT QUALITY

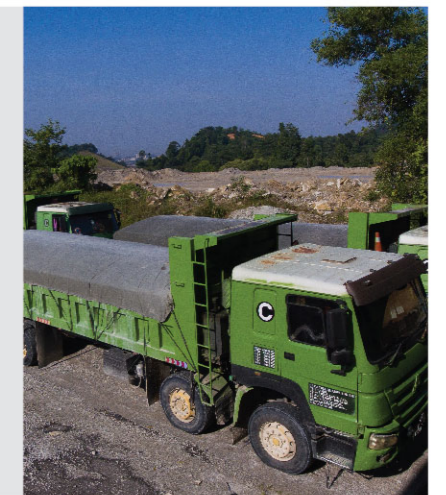
Eco-Sand produced using VSI crushers results in higher consistency as compared to quarry dust, mining sand or river sand.



2

### RELIABLE SUPPLY

Eco-Sand produced in a controlled environment will ensure reliable supply of fine aggregates to replace the depleting sources of mining sand or river sand.



3

### STRONG AND DURABLE

Eco-Sand does not have organic impurities. This ensures that the concrete produced using Eco-Sand will be strong and durable.



4

### ENVIRONMENTAL SUSTAINABILITY

Eco-Sand is produced under strict environmental control by using the most energy efficient processes. This reduces our environmental impact for sand production. The extraction of mining sand or river sand often results in degradation of the environment and erosion of river banks.

5

### COLOUR UNIFORMITY AND PLEASING APPEARANCE

The consistent source of crushed rocks ensures that the colour of Eco-Sand is uniform.



Colour Uniformity

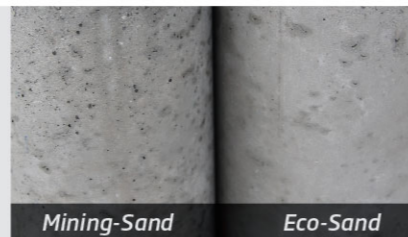


Pleasing Appearance

6

### EXCELLENT SURFACE FINISHING

The consistency in grading and higher percentage of fines in Eco-Sand contributes to excellent surface finishing, as compared with mining sand or river sand.



Mining-Sand

Eco-Sand



## PROJECT REFERENCES

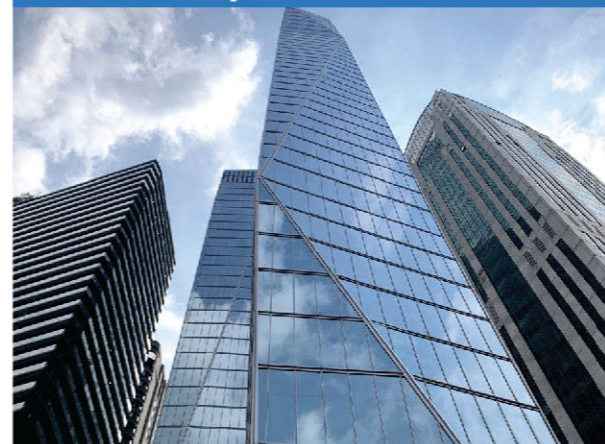
**SIGNATURE TOWER (75.0MPa)**  
High Strength Pumpable Concrete



**THE CAPERS**  
High Workable Concrete



**MENARA YTL KL**  
Environmentally Sustainable



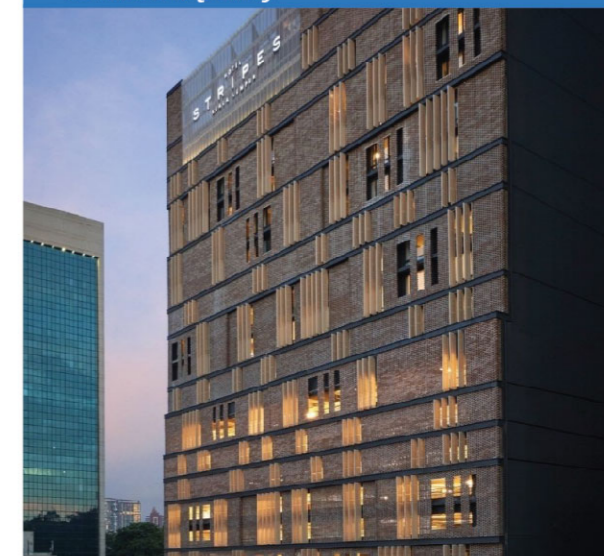
**LAKE FIELDS**  
Environmentally Sustainable



**SENTOSA INTEGRATED RESORT**  
1.2 million m<sup>3</sup> of Eco-Sand Concrete



**HOTEL STRIPES KUALA LUMPUR**  
Consistent Quality



## ABOUT YTL CEMENT

### Building Together

YTL Cement is an innovative leader in construction material and solutions. Initially established in Malaysia to support the local construction industry, YTL Cement is now a leading presence in the Asian region with over 60 years of experience in the industry and operations in 5 countries and counting. With our passion for building better deeply rooted in our beginnings as a construction company, we're committed today to offer world-class quality products and end-to-end solutions to the market's needs.



Some of the key products and services provided include cement, ready-mixed concrete and aggregates, used in various projects ranging from small, local projects, to the biggest and most technical and architecturally-challenging infrastructures. As urbanization increasingly impacts our planet, we provide innovative products and building solutions with a clear commitment to sustainability so that we may build nations together.

## ABOUT BATU TIGA QUARRY



Batu Tiga Quarry, a member of the YTL Cement Group is Malaysia's largest quarry products supplier strategically located throughout the country. We produce 20 million tonnes of quarry products annually to different construction projects.

With close to 1000 trucks serving our customers daily, all our quarries are run professionally, adhering to safety standards and requirements. We operate with state of the art equipment for testing and monitoring throughout the quarrying process to ensure that our products meet customers' specifications.

Under YTL Cement's banner, quarry products are supplied through Batu Tiga Quarry, Bentara Gemilang Industries Sdn. Bhd. & Lafarge Aggregates Sdn. Bhd. We produce the following quarry products:

- Single Sized and Graded Aggregates
- Ballast
- Stone Column
- Crusher Run & Fill Materials